

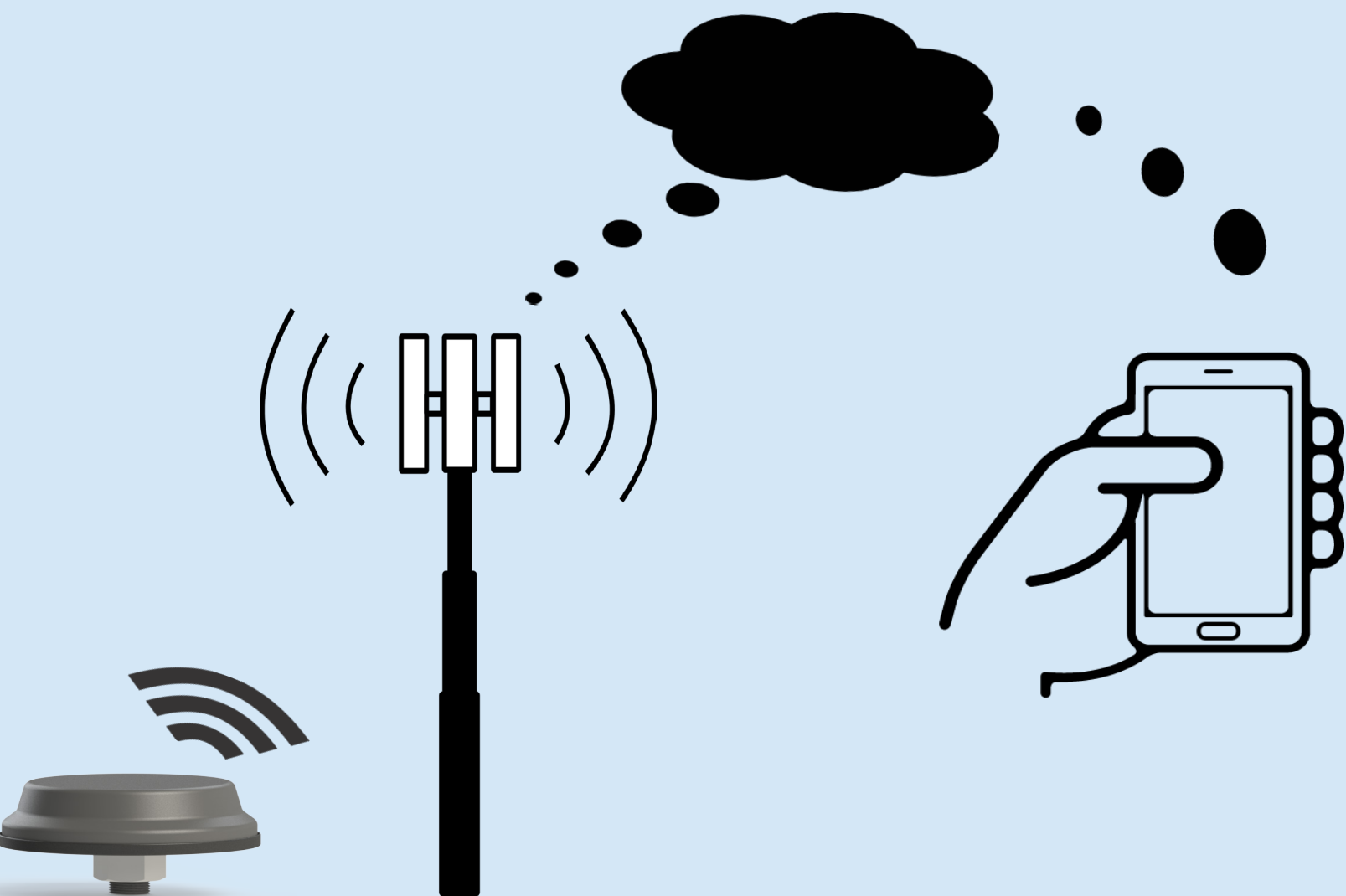


What Makes Cellular a Better Choice Than Wi-Fi in Our IoT System ?

WHAT IS THE INTERNET OF THINGS?

The Internet of Things (IoT) is the network of physical devices that are connected to the internet and to each other like vehicles, home appliances that contain sensors, controllers, etc. Multiple protocols are used in the Internet of Things. Cellular and Wi-Fi technologies are two of the most common used protocols.

Our Smart Antenna is an IoT device. It is a programmable cloud -based cellular device, which can be connected to any electrical system as a control or monitor device.



What is the difference between Cellular and Wi-Fi?

Wi-Fi is a networking technology that provides wireless internet access through a router to mobile devices such as smart phones, laptops, tablets, etc in a specific range.



Cellular is a networking technology typically associated with a mobile telephone system. When you are not connected to Wi-Fi and still have internet access on your phone, you are using cellular networking. The main objective of cellular network is to provide a high capacity coverage over wide area.



How Cellular is Better Than Wi-Fi?



Network configuration isn't required in cellular, unlike Wi-Fi you need to setup user and password.



Cellular covers wide areas as cities and towns, unlike Wi-Fi it covers only a specific area as buildings and apartments.



Cellular works during power outage . Wi-Fi depends on a router that is dependent on electricity .



What Cellular Technology do we use ?

We use LTE Category-M1 which is a new low-power wide area (LPWA) cellular technology, specifically designed for the Internet of Things (IoT) and Machine-to-Machine (M2M) communications.



It provides at least 4 times better network coverage in buildings and underground.



It has the priority over other cellular networks.

